

# CERTIFICATE OF LOCATION OF GOVERNMENT CORNER

Northwest Corner of Section 33, Township 108N, Range 43W, 5th P.M.

STATE OF MINNESOTA, County of Murray

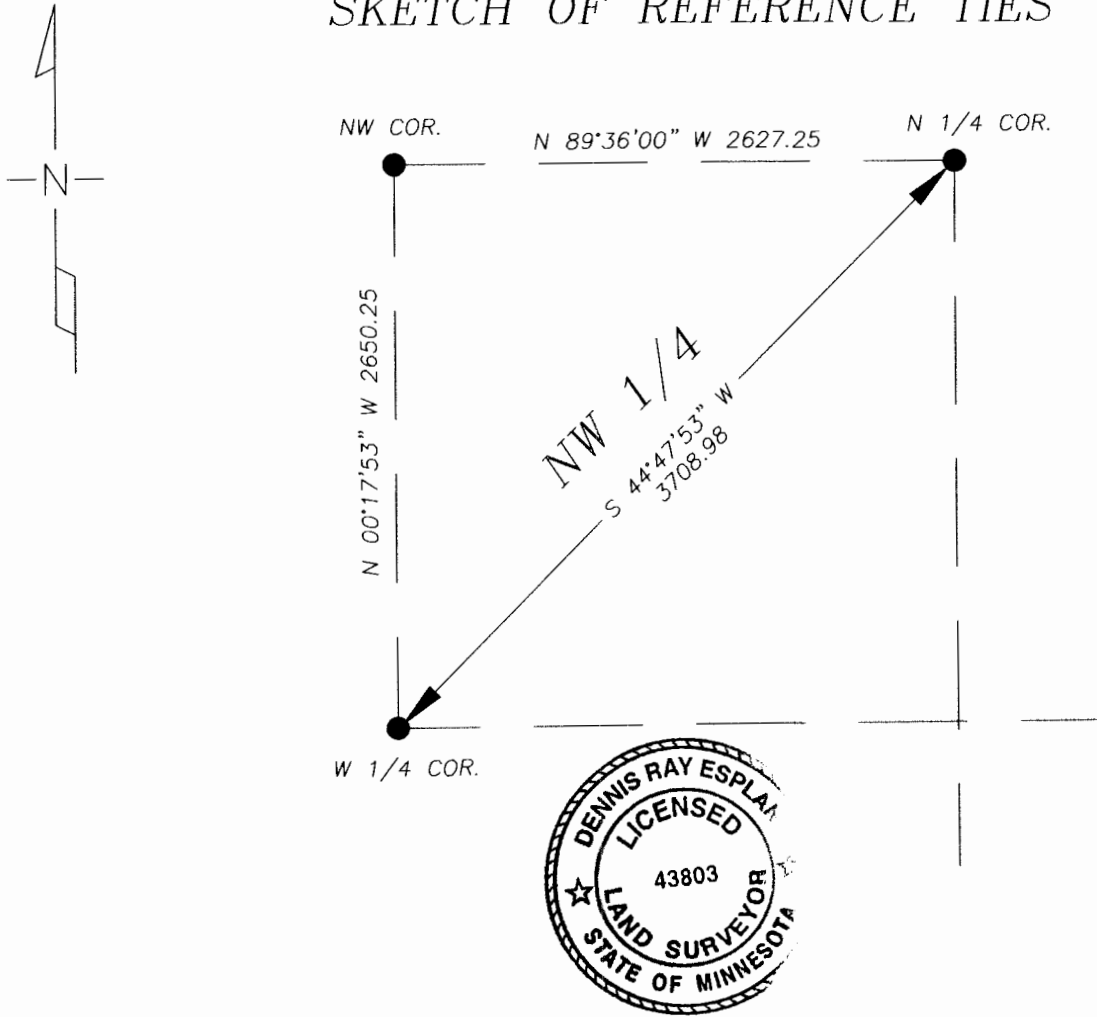
At the corner location shown on the sketch

On 11/08/05 found a 3/4" iron stake. Murray Co. Hwy. Dept. records indicated a steel pin was placed over concrete monument in 1969.

left monument as found       lowered monument,       removed monument (explain)

On \_\_\_\_\_ placed a \_\_\_\_\_

## SKETCH OF REFERENCE TIES



I hereby certify that this document and the data contained herein was prepared by me or under my direct supervision.

Dennis Ray Esplan      11/09/05  
SIGNATURE      DATE

MN. LICENSE NO. 43803

- Land Surveyor,       Professional Engineer  
 County Surveyor,       County Engineer

OFFICE OF THE COUNTY RECORDER

I hereby certify that this document was filed in the Co. Recorder's Office at \_\_\_\_\_ on the

\_\_\_\_\_ day of \_\_\_\_\_

County Recorder \_\_\_\_\_

By \_\_\_\_\_, Deputy

DOCUMENT NO. \_\_\_\_\_